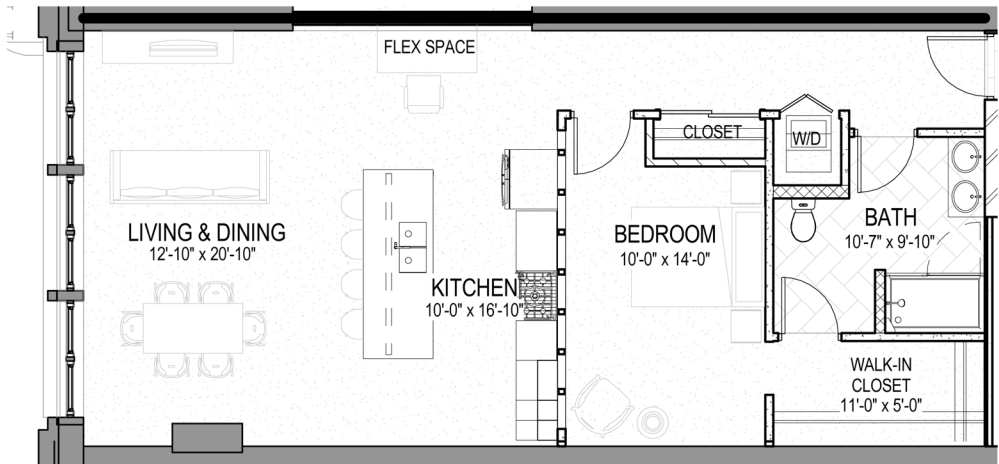


HANDICAP ACCESSIBLE UNIT 201



UNITS 301 & 401

SMYTH & LOFTS

1 BEDROOM + 1 BATH UNITS 201, 301, 401

212 N 2nd St., Mpls., MN 55401

UNIT 201 - 963 SF*
 UNIT 301 - 974 SF*
 UNIT 401 - 982 SF*

*APPROXIMATE INTERIOR SQUARE FOOTAGE

